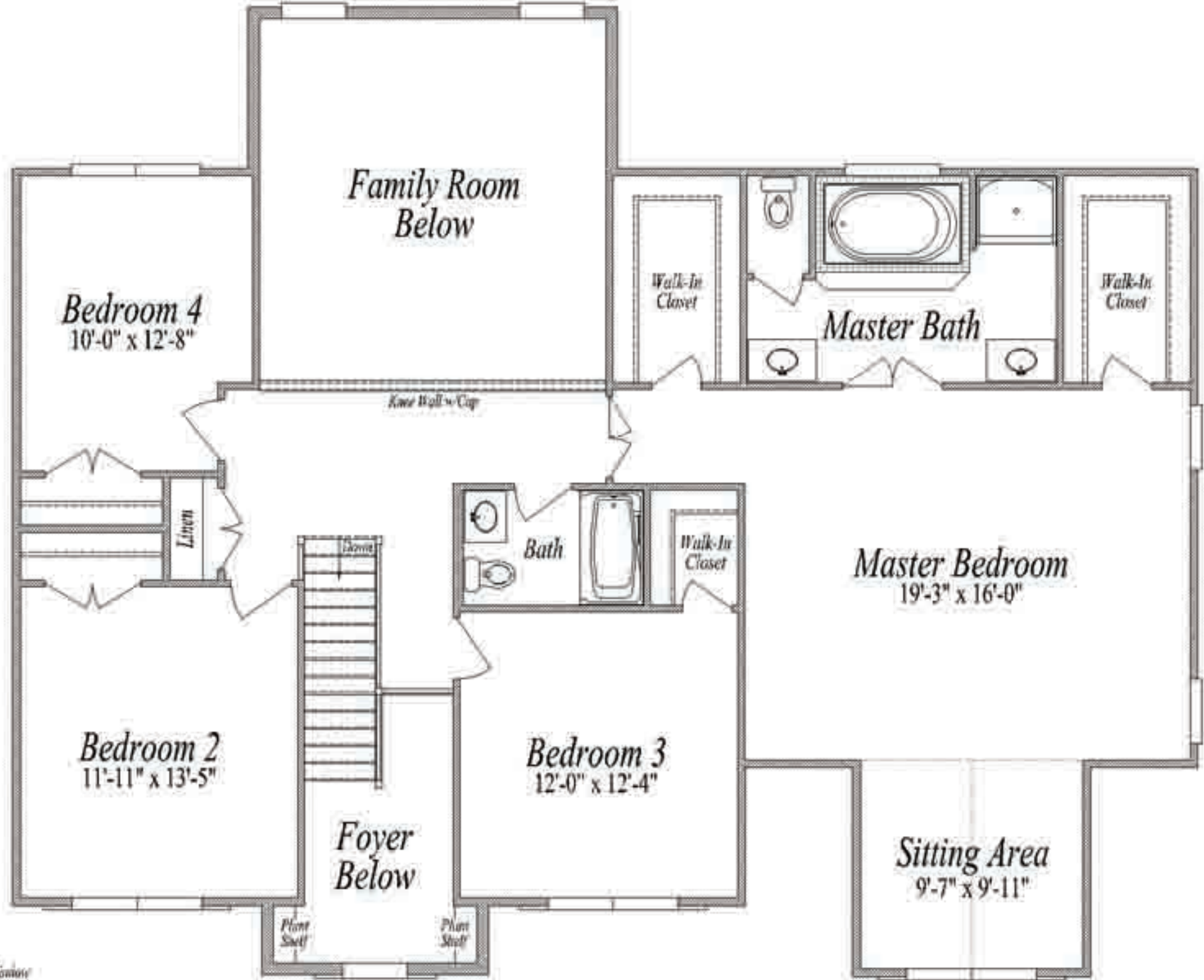
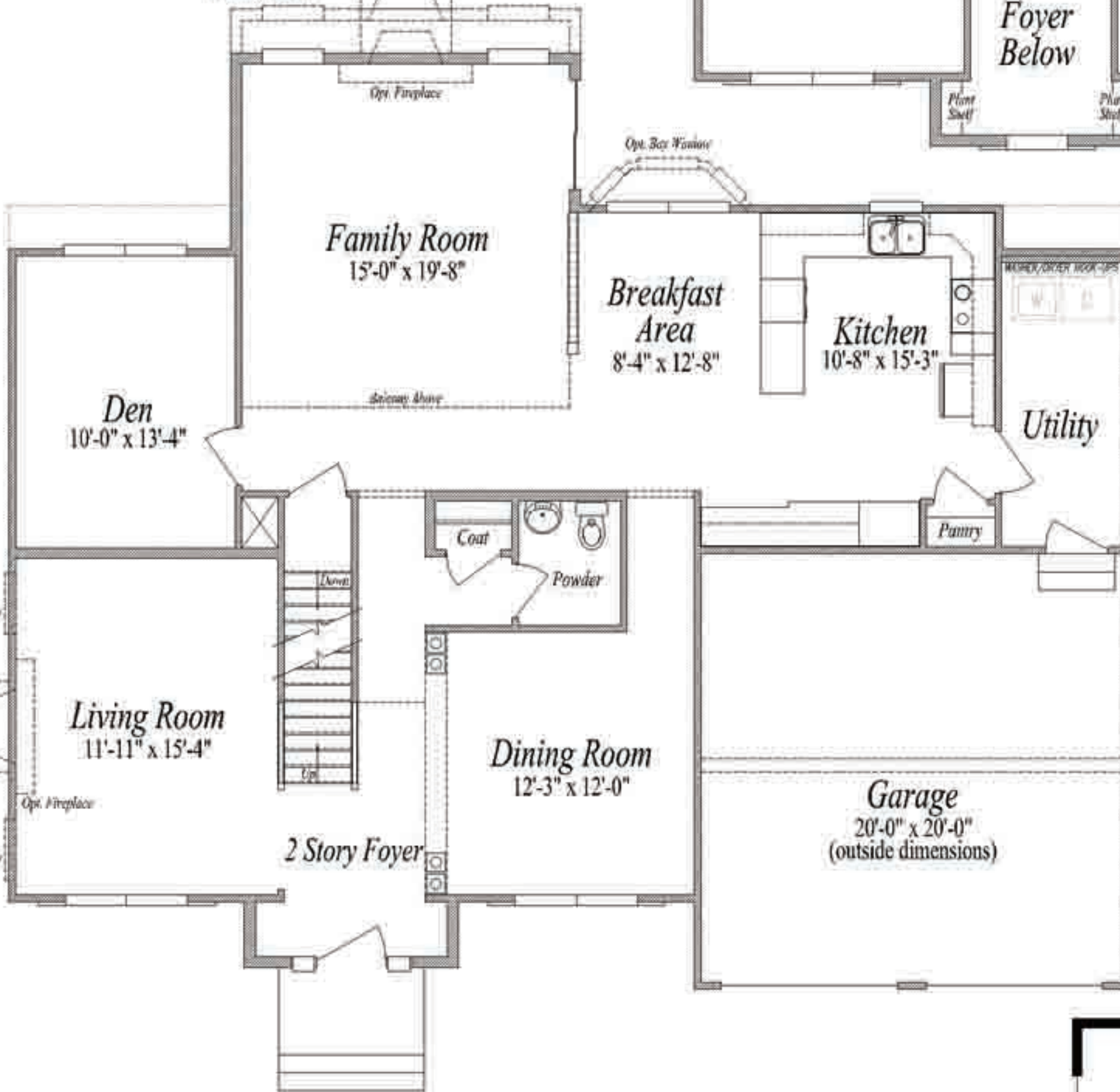


# THE CHESTERFIELD II

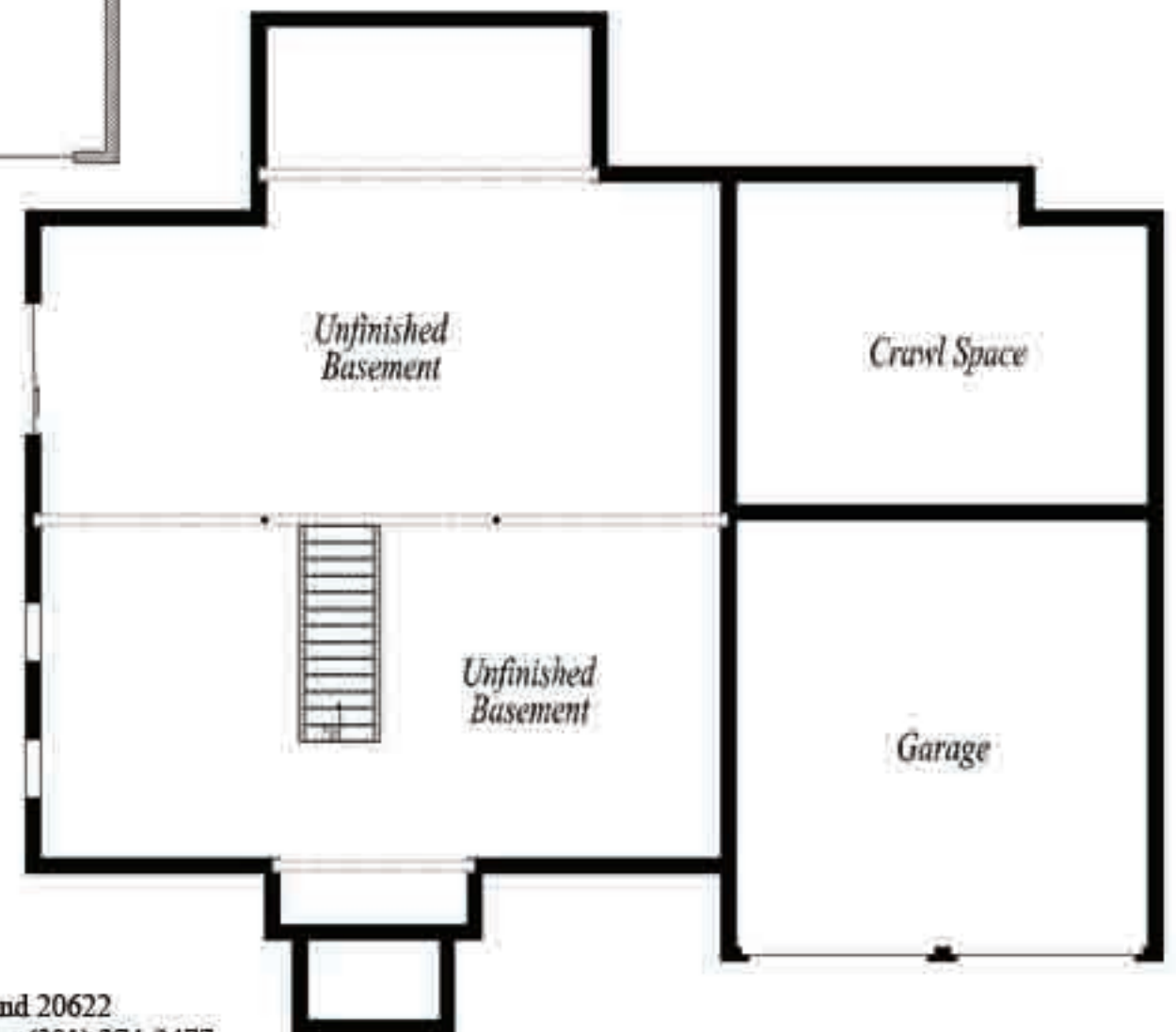
### Second Floor Plan



Optional 2' Extended Family Room



### Optional Basement/Foundation Plan Standard Foundation is Crawl Space



May 3, 2007

**TRI COUNTY BUILDERS**  
 Division of CAI, Inc.  
 30537 Potomac Way, Charlotte Hall, Maryland 20622  
 (301) 884-2121 (301) 870-2799 (410) 535-2121 Fax (301) 274-3477

\*Copyright - All Rights Reserved. Plans and Specifications subject to change without notice.

This sheet is for illustrative purposes only and is not part of a legal contract. Plans are subject to modification as necessary to meet building codes, to facilitate mechanical installation and to incorporate design improvements. Room measurements are approximate. Optional items indicated are available at additional cost. Illustration is artist's conception and may vary in precise detail. Brick and stone fronts are optional in certain subdivisions.